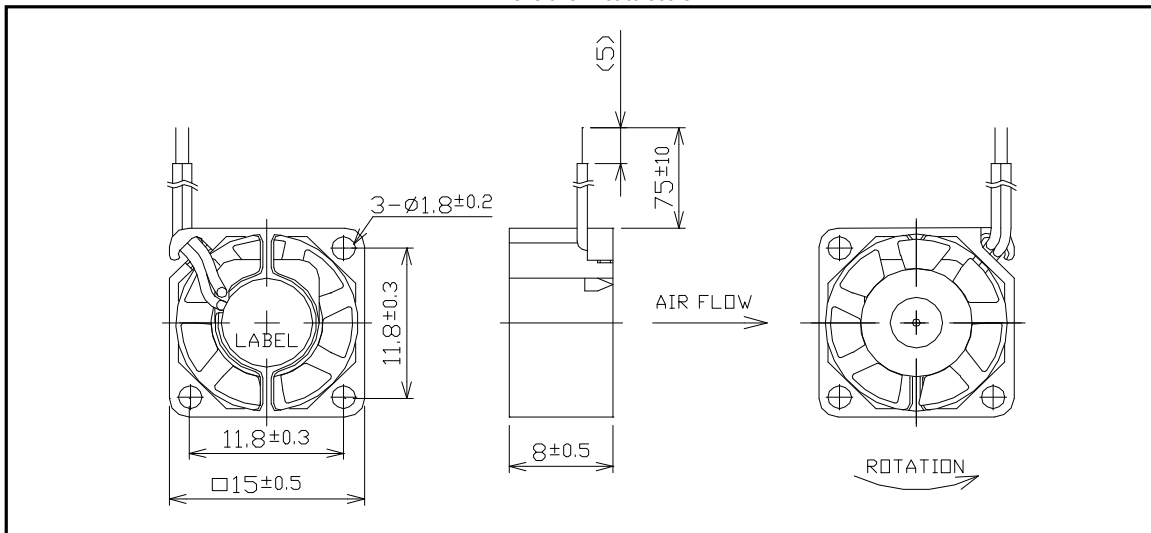


F1508EB TYPE

循環軸受け/メタルインペラ
(15x15x8mm)

Dimensions: Not to scale



Specifications

機種名 (Model)	F1508EB-05YCV				
定格電圧 (DCV)	5				
Rated voltage					
使用電圧範囲 (DCV)	4.5~5.5				
Operating voltage range					
定格電流 (A)	0.07				
Rated current					
定格入力 (W)	0.35				
Rated input					
最大風量 (m3/min)	0.015				
Max Air Volume					
最大静圧 (Pa)	15				
Max Static Pressure					
A特性音圧レベル (dB)	35				
Noise Lv at 0.1m (A-weighted)	(10cm)				
回転速度 (min ⁻¹)	12,000				
Rotation frequency					
期待寿命 (h)	20,000				
Life expectancy	★				Room temp-humidity

使用温度範囲(Operating temp. range) :	-5 ~ +60°C ★★
保存温度範囲(Strage temp. range) :	-40 ~ +70 ★★
リード線(Lead Wire) :	UL1571 AWG30: Red(+), Black(-)
重量(Weight):	2.0g
絶縁抵抗(Insulation resist.) :	Min 10M Ω at DC500V (Between frame and leadwire)
耐電圧(Voltage withstand):	5mA (AC500V 1minute or AC600V 1 second, between frame and leadwir

★In room temperature and humidity ★★In room humidity Room temp.=20±15°C, Room humidity=65±20% 0203
Specifications subject to change without notice. Copyright ©2002 Shicoh Engineering Co., Ltd.

<http://www.shicoh.com>

 **SHICOH**